

# Assembly Manual

**LED working light (7092.65)**

## Introduction

### **Foreword**

The installation procedures described in this assembly manual should only be undertaken by a Hako service centre or a workshop authorised by Hako. Members of staff with the required level of training and expertise are only guaranteed in the said workshops.

This assembly manual may be used only in conjunction with the instruction manual of the machine.

### **Safety instructions**

Please observe the general safety regulations of the corresponding machine in the relevant operating manual.

Place the machine on a level surface and secure it with the parking brake. Switch the machine off and pull out the key.

We would expressly advise you that no legal claims may be asserted based on the contents of this manual. In the case of necessary repair work, please make sure that only original spare parts are used. Only original spare parts guarantee constant and reliable operational readiness of your machine. We reserve the right to make changes in the interests of further technical development.

Valid as from: September 2017

**Hako GmbH**  
**23843 Bad Oldesloe, Germany**  
**Hamburger Str. 209-239**  
**Phone +49 4531 806-0**

## 1 LED working light

### 1.1 Parts list

- 1 1x LED working light compl.
- 2 1x corrugated hose holder

### 1.2 Before installation

- 1. Place the machine on a level surface and turn it off.
- 2. Remove floor mat in footwell.
- 3. Remove brake button (Fig. 1/3)

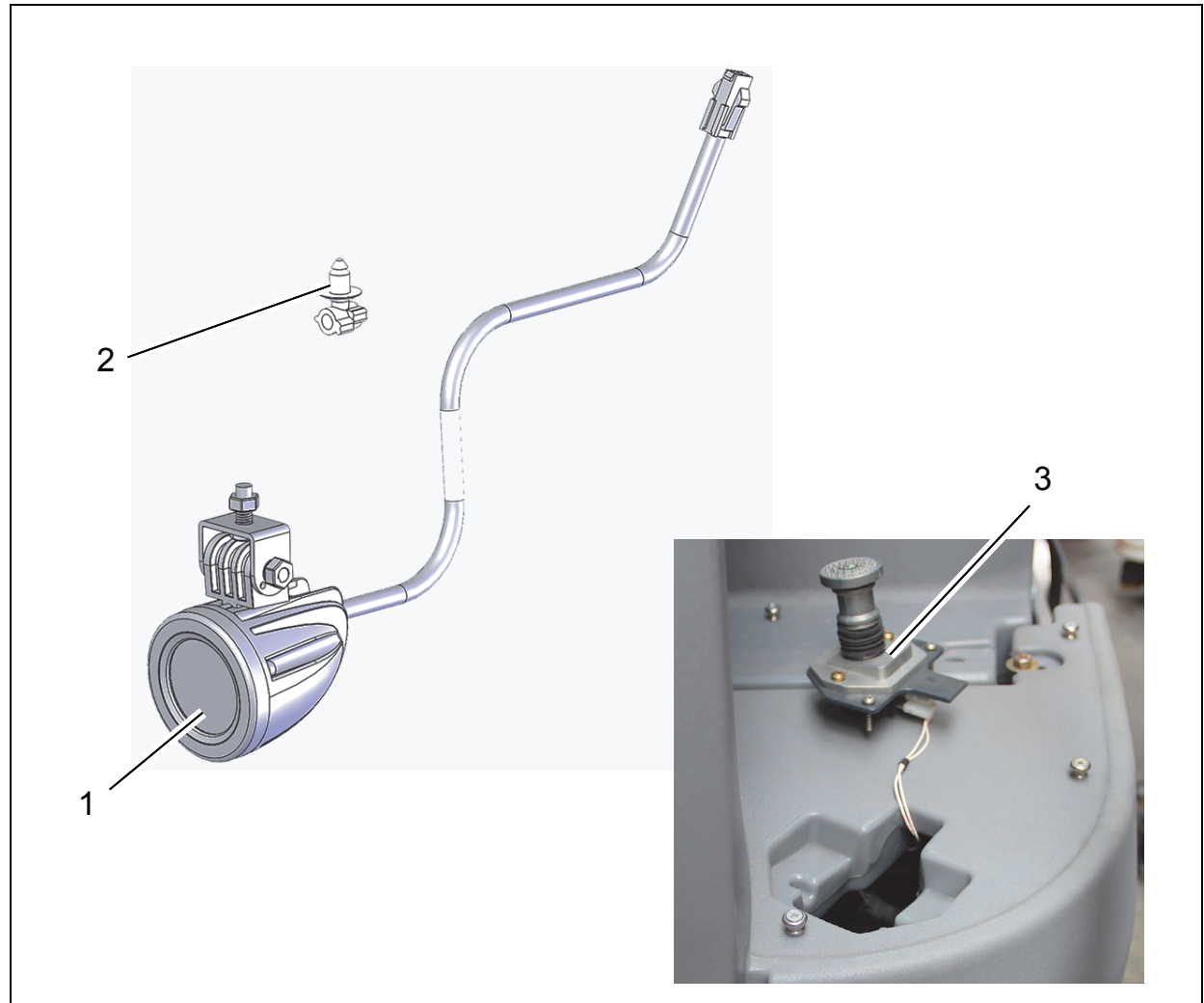


Fig. 1

## LED working light

### 1.3 Installing the working light

The working light is installed on the left next to the front wheel (Fig. 2/1).

1. Fit working light to holder of chassis (Fig. 2/2).
2. Insert corrugated hose holder into existing hole (Fig. 2/3).
3. Secure cable of working light to corrugated hose holder in such a way that it is free of tension.
4. Lead cable through floor opening into the interior (Fig. 2/4).
5. Connect plug of working light to 2-pin connector E01 of cable loom W 3 (Fig. 2/5).

### 1.4 Adjusting the working light

Align working light so that it is straight-ahead in the direction of travel.  
Set tilt angle to approx  $5^{\circ}$  (Fig. 2/6).

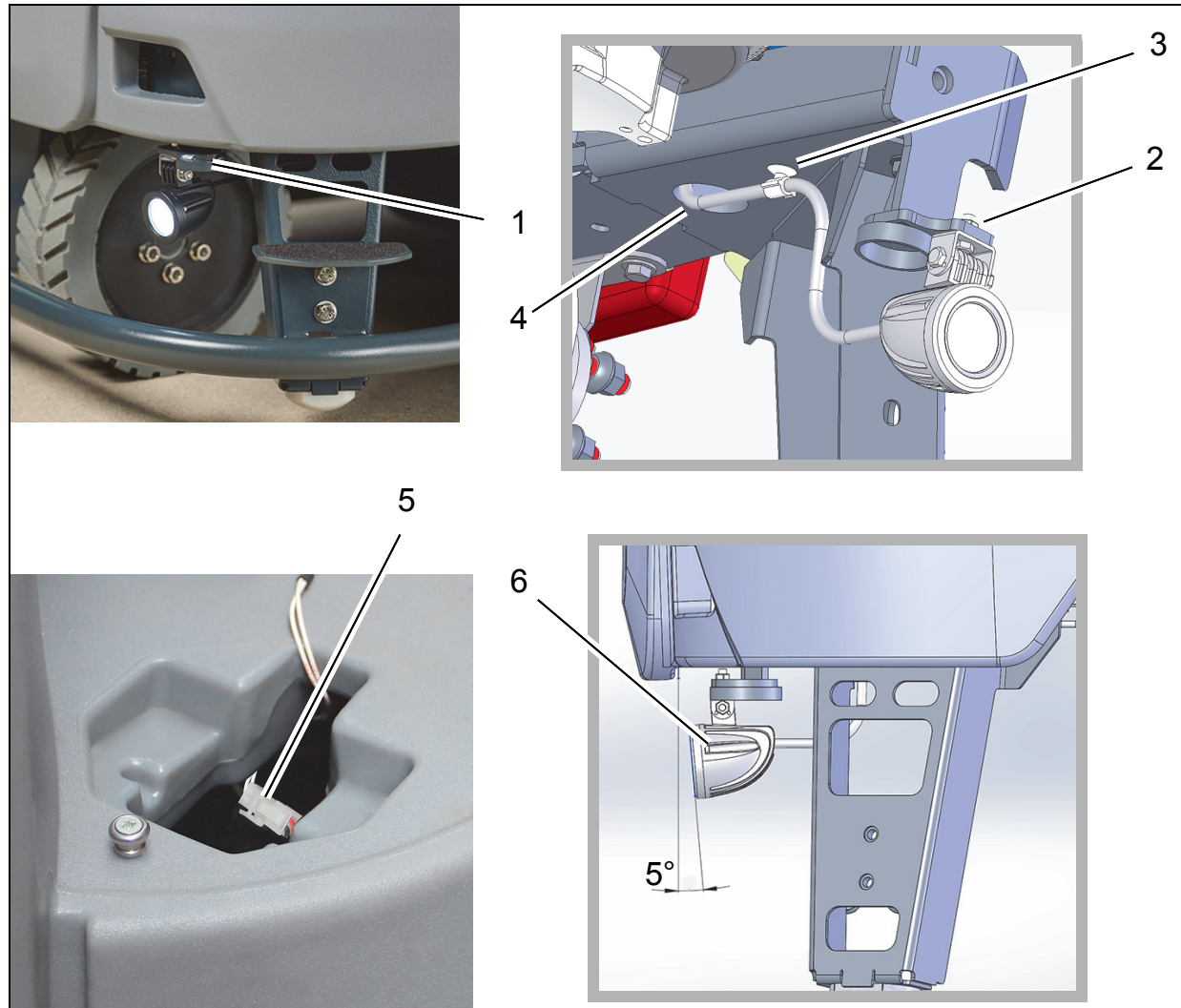


Fig. 2

## 1.5 Setting in the configuration menu

The LED working light option must be activated via the configuration menu.

Option	Value
LED working light	1. 6. 1.

### Requirements:

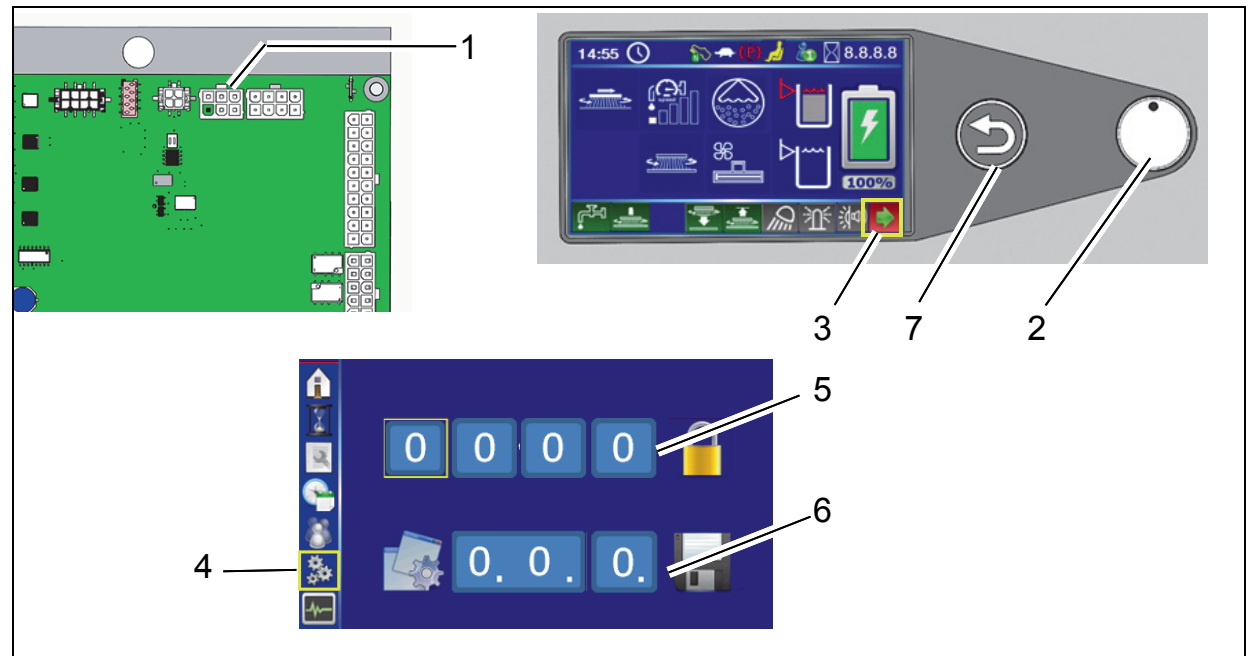
- Batteries inserted
- 4-digit code or diagnosis plug 97097737 is present.

If diagnosis plug is used:

Connect diagnosis plug to slot X20 of controller A1 (Fig. 4/1).

### Setting:

1. Turn on the machine.
2. Select the arrow softkey (Fig. 3/3) on the control panel using the turn-push knob (DDS) (Fig. 3/2) and press to access the sub-menu.
3. Select the configuration menu in the sub-menu (Fig. 3/4).



**Fig. 3**

4. Enter the 4-digit code in the configuration menu at the top (Fig. 3/5):
  - Rotate the DDS until the required field is reached.
  - Press DDS, then rotate to adjust the value.
  - Press again to save the value.
 Alternatively, use the diagnosis plug!

5. Select the value of the option under (Fig. 3/6) in the configuration menu and save by pressing the DDS. After confirmation of the final digit, *OK?* appears. Press the DDS again to save the value. The saved value is now displayed in green. If the value is not to be saved, exit the menu using the return button (Fig. 3/7).

# Hako

Clean ahead

## Advanced Technology for a Cleaner, Better Environment

88-10-3150 - 3925-00



Hako GmbH • Head Office • Hamburger Str. 209-239 • 23843 Bad Oldesloe • Germany  
Phone +49 4531 806-0 • Fax +49 4531 806-338